

SEMI-AUTOMATIC DICING SAW

SS30

New standard for semi-automatic dicers with enhanced operability

Footprint

Small footprint with highly stable structure

Compliant with varieties of work

- □ 250 mm, 300 x 250 mm
- Alignment with multiple works attachment
- Deformed and elastic work alignment

High-resolution microscope

Improved resolution

User Friendly

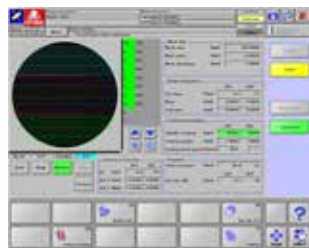
Improved operability with the 17-inch touch panel screen



TOKYO SEIMITSU

Main Features

- 1 Accommodates various types of workpieces as standard option:
1: 12-inch frame
2: □250 mm, 300 x 250 mm
- 2 Standard Spindles up to 60,000 rpm
Option: High speed spindle 80,000 rpm
High power spindle 2.2 kW(30,000 rpm)
- 3 Enhanced throughput
- 4 17" LCD touch panel and new GUI
(Graphical User Interface)
with simple layout and large touch-buttons allow users' interactive operation
- 5 Easy and simple Kerf check function
(AI kerf check function)
- 6 Stores over 10,000 recipes
- 7 USB port as standard option
(USB memory device can be used as external memory)
- 8 Ease-of-maintenance
Wide maintenance door and front-side accessibility allows easy routine maintenance
- 9 Optimized vacuum controller
reduces 50% of air consumption compared with existing model



▲ New GUI

Specifications

Max. work size	Φ 12 inch □ 250 mm, 300 x 250 mm	
Max. number of frames	12 inch	
Spindle	Rotation	60,000 min-1
	Max. blade diameter	Φ 2 to 3 inch (Φ 60 to 80 mm)
	Rated Output	1.8 kW
X axis	Available cutting range	310 mm
	Max. Speed	800 mm/sec
Y axis	Available cutting range	310 mm
	Max. Speed	300 mm/sec
	Accuracy	0.002 mm / 310 mm
Z axis	Stroke	35 mm
	Max. Speed	80 mm/sec
θ axis	Repeatability	0.001 mm
	Range of rotation	380°
Misc	Voltage	3 Phase AC200 to 220V ±10 % (Transformer adoptable)
	Power consumption	4.0 kVA(MAX)
	Air pressure	0.55 to 0.7 MPa
	Avg. Air consumption	180 L/min(0.55 MPa)
	Cutting Water, and others (pressure)	0.3 to 0.5 MPa
	Cutting Water, and others (Max Flow)	2.0 L/min
	Cooling Water (pressure)	0.3 to 0.5 MPa
Cooling Water (Max Flow)	1.9 L/min(0.3 MPa)	
Exhaust	5 m³/min more	
Size (W*D*H)	890 mm×1,000 mm×1,560 mm	
Weight	800 kg	

Maintenance

Large access area is secured.

